

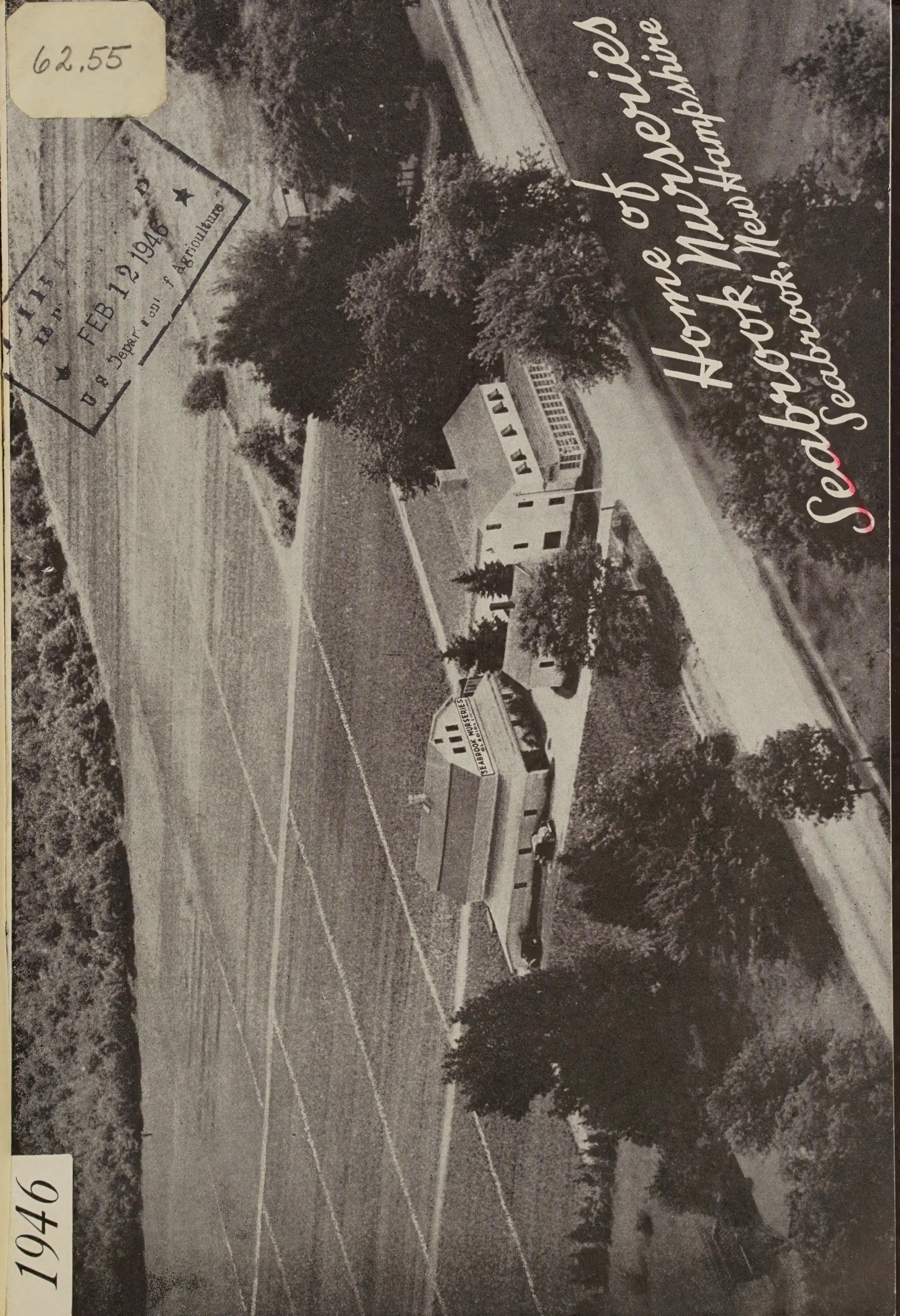
Historic, Archive Document

Do not assume content reflects current scientific knowledge, policies, or practices.

1946

62.55

W. H. H. H.
FEB 12 1946
U. S. Department of Agriculture



Home of Nurseries
Home New Hampshire
Seabrook, New Hampshire
Seabrook

PLEASE READ CAREFULLY BEFORE ORDERING

GUARANTEE

We guarantee to do our utmost to please our customers. We mean to send out only clean bulbs, free from disease and insects. Any claims or complaints in regard to bulbs should be sent soon after receiving the bulbs.

Of course if any bulbs are not true to name you can not make claims for that until after blooming. If anything goes wrong we always try to make a satisfactory settlement with the customer. This is the only way that anyone can hope to build up a business.

However we do not guarantee in any way **the bulbs you harvest** as unsatisfactory growing conditions or disease in the soil are beyond our control and we cannot be responsible for the crop you harvest except that if bulbs should not be true to name we will be glad to replace them or make a satisfactory settlement.

ORDER EARLY

Many varieties are sold out early. Order promptly to avoid disappointments. But late orders will receive careful attention. Important. Open all packages upon arrival. Keep in a cool, dry place.

TERMS

Our terms are Net Cash before shipment unless arranged otherwise. 25% will hold winter orders until March first. Orders not fully paid for will be sent C. O. D. for the balance at time of shipment to you.

GRATIS

All orders are filled with a liberal overcount. Gratis of varieties other than ordered are included in each customer's package. We strive to keep our prices as low as other reliable growers, and will **gladly include overcount to cover any reasonable reduction after list is issued.**

POSTAGE

All orders amounting to \$2.00 or over will be sent prepaid to any point in United States, if taken from our **Prepaid List**. On orders of less than \$2 add 15 cents postage. No single item accepted for less than 25 cents.

PLEASE READ CAREFULLY

All quotations are subject to previous sale. Due to increased costs of labor and all the other items of expense it has been necessary to increase our prices on most of the older varieties. However, our prices on most of the newer varieties have been reduced. We urge that you place your orders early so that you may not be disappointed. Each year we are unable to fill late orders for a number of varieties. Orders are segregated as soon as possible after being received but will not be shipped until after danger of freezing is past, unless you request otherwise. However, bulbs can be sent any time.

**PLEASE MAKE MONEY ORDERS PAYABLE AT THE EXETER
NEW HAMPSHIRE, POST OFFICE**

—IMPORTANT—

Please Select Second and Third Choice, if Possible

If no second choice is given we shall have to substitute as we are very short of help and must cut down on our correspondence

**BULB SUPPLIES ARE EXTREMELY SHORT. WE WILL FILL YOUR ORDER
IN ROTATION, SO PLEASE ORDER EARLY**

All Stock Subject to Prior Sale. Obvious Errors in Prices are Cancelled.

SEABROOK NURSERIES

Mabel M. Rowe, Prop.

New England's Popular Gladiolus Farm

SEABROOK

NEW HAMPSHIRE

A Message of Thanks

WE'RE NEVER TOO BUSY TO SAY "THANK YOU" to our patrons nor are we ever too busy to give complete and careful attention to everyone who comes to our gardens or orders by mail. But at the year-end the members of SEABROOK NURSERIES feel urged to express a very special "THANK YOU" to cover the whole year and to go to all the friends whose patronage and good will have meant so much to our success.

The picture on this catalogue cover will give all our many friends and patrons both far and near a glimpse of our large gladiolus field, and store house. It is the best advertisement we know of.

So we are sending you this sincere message of appreciation to let you know what is in our hearts. We invite you to visit our 20 acres of gladiolus, in bloom from July 15th until frost, located on U. S. Route 1, main highway to Portsmouth, N. H., six miles from Newburyport, Mass.

We regret that we were unable to fill late orders for a number of varieties last spring. Because of the shortage of gladiolus bulbs in the country the situation will be much more acute this coming spring. Therefore, we urge you to place your orders early.

Happy New Year to All,

SEABROOK NURSERIES,

Seabrook, N. H.

Mabel M. Rowe, *Prop.*

GLAD-I-O'-LUS:—

Please pronounce this wonderful flower right. The accent on the O'.

GLAD-I-O'-LUS and use the same form for both singular and plural. It hurts to hear one say GLADIOLA or GLADIOLIS!

DO GLADS CHANGE COLOR?

GLADIOLUS do NOT Change Color.

We have been asked this question hundreds of times. So many varieties divide or split. Suppose you plant twelve mixed bulbs, when you dig them you find you have about thirty bulbs. That is the reason you have more of one color than others. Many varieties do not divide, so you dig only one new bulb on the one you planted. And some not quite so strong just die out in the ground.

Of course glads grow older each year, you dig a new bulb not a young one. So it is best to keep adding more bulbs to your collection each year.

PLANTING TIME

Our planting time here is around APRIL to JUNE, so when ordering your bulbs to be sent to you at planting time, please state when planting time is in your locality. It will help us a lot.

WHEN YOU CHANGE YOUR ADDRESS

Please notify us so we can change our files. Also please give your old address at the same time. This will save us many catalogues and you will receive yours. **THANK YOU.**

C.O.D. ORDERS

Please do not ask us to send an order C.O.D. without your making a deposit on it. If it is a small order we shall have to ask for a deposit of at least a dollar. Larger C.O.D. orders should be accompanied by 25% of the value. **We cannot send out any more C.O.D. orders without at least some deposit.**

CARE AND CULTURE OF GLADIOLUS

Select a sunny location away from the roots of trees and shrubs. Plant about six inches deep, having bulbs five inches apart.

Place bulbs in a well worked trench in staggered or zigzag row— . . . and cover at first with about two inches of loam; when shoots begin to appear, work balance of loam into the trench. At all times keep the soil loose. As an aid to producing larger blooms work in fertilizer around the plants when about a foot or more in height. At the time flower spikes appear, abundant watering is very beneficial.

Bulbs should be dug before leaves turn brown. Cut stock close to the bulb, spread them out to dry for two or three days in a sunny location and then place in an open shed or room for two weeks or more before storing them away in a cool dry place. Keep them spread out and not over three inches deep, give bulbs an occasional airing during the winter.

When cutting flowers, leave at least four leaves remaining on the plant. Positive injury to the blooming qualities of the bulbs for the following year will occur if this precaution is not heeded.

For cut flowers, cut the spike when first bud fully opens. The remaining buds will open nicely and give a longer period of bloom and greater enjoyment.

Remove wilted blossoms, change water and cut off a portion of the stems each day. These will then fit in a smaller vase.

CONTROL OF THRIP

This insect can be carried on clothing, from one field to another by birds, high winds or in bouquets. Many bulbs are perfectly clean when planted, yet contact Thrip before season is over.

Thrip are black and cream, 1-16 inch long and live in the folding gladiolus leaves. Sometimes they can be detected by the silvery sheen on leaves although many times discovery is too late and the buds do not open as the insect has extracted all juice from them previously.

When plants are about three inches tall and thrip is found it is best to use a solution of the following as a **weekly spray**.

Use 1 pound Tartar Emetic, 4 pounds brown sugar to 25 gallons water for weekly spray. Tartar Emetic is a deadly poison to human beings. Tartar Emetic spray will not burn the foliage. Or use 3 gallons water, 1/2 tsp. of Tartar Emetic and 1-3 cup sugar for smaller amounts.

If discovery is made too late, it is best to cut tops off, about six inches from ground and burn them, allow bulbs to stay in ground until digging time. The above spray can be used on remaining stalk to kill anything which might be left.

Dig, clean and dry bulbs in usual manner. Place thoroughly dry bulbs in boxes. Sprinkle Naphthalene Flakes over bulbs at the rate of 1 pound to 3000 bulbs or 1 ounce to 100 corms. Immediately cover receptacles with paper to confine fumes. Keep bulbs at temperature of about 60 degrees for three weeks. Store in dry place, uncovered, at 40-50 degrees for winter.

Warning—Treat stock in Fall, before roots swell or form at base. Naphthalene adhering to bulbs may burn rootlets where they appear. Bulbs must be thoroughly dry before treating with Naphthalene.

Bichloride of Mercury can be used to disinfect in proportion of 1 ounce to 8 gallons of water, or 10-15 grain tablets to gallon water, or if only a small amount of bulbs use 1-5 grain tablet to 1 pint water, soaking bulbs in solution for 3 hours. If many varieties to soak at the same time, place them in sugar, salt or net bags, labelling each variety, using little wood labels. A waterproof pencil can be used on the labels for marking. Do not use metal containers. This is done before planting.

NAPHTHALENE FLAKES, 2 POUND PACKAGE, 65c, WITH BULB ORDERS
This is enough for about 5,000 bulbs.

LYSOL DISINFECTANT.—As a dip for gladiolus bulbs, it has proven very satisfactory, 4 teaspoonfuls of Lysol mixed in 1 gallon of water, soaking the bulbs for 6 hours eliminates thrip and stimulates root growth. Although this method has not been tried by us, we have known of others, who have had success with Lysol. It may prove more satisfactory than the Mercury method.

SEABROOK NURSERIES GLADIOLUS

Gift Collections

Plan on presenting Gladiolus bulbs on Special Occasions, Birthday, Valentine, Easter, Mother's Day, Father's Day, or just any day before planting time so your relatives or friends may enjoy these lovely blooms this Summer, in their gardens.

These Selections are made up of large sized bulbs correctly labeled. Total value of any single collection is over \$2.50.

ANY ONE COLLECTION FOR \$2.50—ANY THREE FOR \$7.00

| A—6 Each | B—6 Each | C—6 Each | D—6 Each |
|-----------------|-----------------|-----------------|------------------|
| Red Lory | Albatros | Duna | Ellen Marie |
| Beacon | Flaming Meteor | Golden Chimes | E. I. Farrington |
| Maid of Orleans | King Lear | J. S. Bach | Lotus |
| Symphony | Gold Dust | Picardy | Debonair |
| Rosa Van Lima | Halloween | Peggy Lou | Token |
| Gold Dust | Reverie | Pelegrina | Vagabond Prince |
| E—6 Each | F—6 Each | G—6 Each | |
| Black Opal | Flora Farmer | Bit O'Heaven | |
| Blue Beauty | Leona | Dr. Dentz | |
| Early Rose | Mr. L. G. Rowe | Mr. L. G. Rowe | |
| Golden Cup | Vagabond Prince | King Arthur | |
| Miss Alameda | Shirley Temple | Polar Ice | |
| Coronation | Camellia | Margaret Fulton | |

IMPORTANT—Open all Packages upon arrival and keep in a cool dry place, about 40 degrees is best.

ROCKWELL'S BOOK ON GLADIOLUS

Gladiolus, by F. F. Rockwell. Recommended as the "best brief guide on gladiolus growing." It tells how to plant, fertilize, and cultivate; how to grow from seed or bulb-lets; how to harvest and cure; how to handle for cut flowers and every other detail needed for success with this popular flower, 45 illustrations, 78 pages. Prepaid \$1.25.

SIZE IN BULBS

In Retail list, the large bulbs that we offer are $1\frac{1}{4}$ inches and over in diameter; medium size are $\frac{3}{4}$ inch up, and small bulbs $\frac{3}{8}$ inch up. For Wholesale sizes see list.

Beside the originator's name we have listed the approximate flowering season of each variety as follows:

- E—Early, under 70 days from planting.
- EM—Early Midseason, 70-80 days from planting.
- M—Midseason, from 80-90 days from planting.
- LM—Late Midseason, over 90 days from planting.
- L—Large M—Medium S—Small Blts. Bulblets.

ON FAIR SIZED ORDERS, EXPRESS is safest and best especially in the winter time; we advise express if you are situated so as to get free delivery by the express company.

SEABROOK NURSERIES GLADIOLUS

| | Per | Large | Medium | Small | Bulblets | Per |
|--|---------|-------------|--------------|--------------|----------|---------|
| ALADDIN (M) Palmer Huge, ruffled, bright salmon, cream blotch | 3 10 | .25 .80 | 5-.25 .50 | | .25 | 100-.20 |
| ALBATROS (M) Pfitzer Tall, large pure white. | 3 10 | .25 .80 | 5-.25 .50 | | .25 | 100-.20 |
| ALGONQUIN (E) Palmer Brilliant red, large wide open blooms. Tall. | 2 10 | .20 .80 | 3-.25 .60 | 5-.25 .40 | | 100-.25 |
| ALSACE (M) Benedict Beautiful buff apricot. Heavy textured petals, fluted Large decorative | 1 10 | .25 2.00 | .15 1.00 | | | |
| AMERICAN COMMANDER (M) New Tall, clear red. Vigorous grower. | 1 10 | .15 1.00 | 2-.20 .80 | | | |
| AMRITA (M) Palmer Ruffled, light buff, rich yellow throat. Large blooms well placed | 3 10 | .25 .80 | 5-.25 .50 | | | |
| APRICOT GLOW (EM) Palmer Tall, sturdy prim of warm buff edged soft apricot. Lovely cut flower. | 3 10 | .25 .75 | 5-.25 .50 | | .25 | 100-.15 |
| BABY BETTY (EM) Kinyon Small decorative, cream blending to light pink at petal tips. Graceful. | 3 10 | .25 .75 | 5-.25 .50 | | .25 | 100-.20 |
| BAGDAD (LM) Palmer Large smoky, old rose, 5-6 open. Tall | 3 10 | .25 .80 | 5-.25 .50 | | .25 | 100-.25 |
| BARCAROLE (M) Palmer Deep ruffled orange. Heavy substance. | 3 10 | .25 .80 | 5-.25 .50 | | .25 | 100-.25 |
| BEACON (LM) Palmer Clear red salmon, cream blotch. Tall. | 3 10 | .25 .80 | 5-.25 .50 | | .25 | 100-.20 |
| BELLA DONNA (E) Pfitzer Early large light blue, darker blotch. | 3 10 | .25 .80 | 5-.25 .50 | | .25 | 100-.25 |
| BERTY SNOW (EM) Mair Large, lavender florets. | 3 10 | .25 .80 | 5-.25 .50 | | .25 | 100-.25 |
| BETTY CO-ED (M) Briggs Soft, creamy pink, prim. Very pretty. | 3 10 | .25 .75 | 5-.25 .50 | | .25 | 100-.20 |
| BETTY NUTHALL (M) Salbach Salmon-pink, yellow throat markings | 3 10 | .25 .80 | 5-.25 .50 | | .25 | 100-.20 |
| BILL SOWDEN (M) Fallu Deep scarlet with immense florets. Many open. | 3 10 | .25 .80 | 5-.25 .50 | | .25 | 100-.20 |
| BIT OF HEAVEN (M) Crow A tall, medium decorative of rich orange | 3 10 | .25 .80 | 5-.25 .50 | | .25 | 100-.20 |
| BLACK OPAL (M) Errey Rich, very dark red. Outstanding exhibition. | 2 10 | .25 1.00 | 3-.25 .60 | 5-.25 .40 | | 100-.50 |
| BLUE BEAUTY (EM) Pfitzer Light blue, petals edged violet-blue. Wide-open florets | 2 10 | .25 1.00 | 3-.25 .60 | 5-.25 .40 | | |
| BUFFETTE (M) Winsor Large, strong growing buff. Florets slightly ruffled of needle point type. Good commercial. | 2 | .20 | .15 | .10 | | |
| CAMELLIA (M) Palmer Large blush white with light orange blotch | 2 10 | .25 1.00 | 3-.25 .60 | 5-.25 .40 | | 100-.25 |

READ CAREFULLY OUR TERMS ON INSIDE FRONT COVER

S E A B R O O K N U R S E R I E S G L A D I O L U S

| | Per | Large | Medium | Small | Bulblets | Per |
|---|-----|-------|--------|-------|----------|----------|
| CAPEHEART (EM) Winsor | 3 | .25 | 5-.25 | | | |
| Light salmon rose, edges of petals deeper, with a slight rose feather in throat. Large florets on tall spike. | 10 | .80 | .50 | .25 | | |
| CASABLANCA Majeski | 1 | .25 | .15 | .10 | | 10-.25 |
| A very fine white. Opens 6 to 8 nicely ruffled florets on tall straight spike. Said to be superior to Snow Princess. Maid of Orleans or Vredenburg as a commercial. | 10 | 2.00 | 1.25 | 1.00 | | 100-3.00 |
| CHAMOUNY | 1 | .25 | 2-.25 | | | |
| Tall dark rose bordered silver | 10 | 2.00 | 1.00 | | | |
| CHAS. DICKENS (EM) Pfitzer | 3 | .25 | 5-.25 | | | |
| Strong growing bright, radiant purple. Many open. | 10 | .80 | .50 | .25 | | |
| CHIEF MULTNOMAH (M) Ellis | 2 | .25 | 3-.25 | | | |
| (Large Dec.) Large, tall, strong growing plant. A rich dark smoky with dark red blotch with several open. One of the best and richest colored smokies. | 10 | 1.00 | .60 | | | |
| CLINGENDAAL (E) Holland | 3 | .25 | 5-.25 | | | |
| Early large orange red | 10 | .80 | .50 | .25 | | 100-.25 |
| COLONIAL MAID (M) Y | 3 | .25 | 5-.25 | | | |
| Tall light lavender, good propagator. | 10 | .80 | .50 | | | |
| COMMANDER KOEHL (LM) Pfitzer | 3 | .25 | 5-.25 | | | |
| Large, clear dark scarlet. | 10 | .80 | .50 | .25 | | |
| CORONA (M) | 2 | .30 | .20 | 4-.25 | | |
| (Large Dec.) Creamy white shading more creamy toward the throat with white rose picotee edge. | 10 | 1.20 | .80 | .50 | | 100-.30 |
| CORONATION (M) Palmer | 3 | .25 | 5-.25 | | | |
| Light salmon, shading to cream. Exhibition type. | 10 | .80 | .50 | .25 | | 100-.15 |
| DAMASCUS (M) Stevens | 3 | .25 | 5-.25 | | | |
| Deep rose-purple, overcast blue, red blotch. | 10 | .80 | .50 | .25 | | 100-.20 |
| DEBONAIR (M) Palmer | 3 | .25 | 5-.25 | | | |
| LaFrance pink. Throat shrimp pink and cream. | 10 | .80 | .50 | .25 | | 100-.15 |
| DEE (EM) Rowe | 3 | .25 | 5-.25 | | | |
| Clear deep apricot prim. Many florets open. Tall. | 10 | .75 | .50 | .25 | | 100-.10 |
| DR. DENTZ (EM) Holland | 3 | .25 | 5-.25 | | | |
| Beautiful rose-pink. Large florets | 10 | .80 | .50 | .25 | | 100-.20 |
| DR. F. E. BENNETT (M) Diener | 3 | .25 | 5-.25 | | | |
| Large fiery red. Many open. | 10 | .80 | .50 | .25 | | |
| DREAM O'BEAUTY | 3 | .25 | 5-.25 | | | |
| Popular deep rose. | 10 | .80 | .50 | | | |
| DUNA (M) Palmer | 3 | .25 | 5-.25 | | | |
| Clear pink-buff. Large blooms well arranged. | 10 | .80 | .50 | .25 | | 100-.15 |
| EARLY DAWN (E) Briggs | 3 | .25 | 5-.25 | | | |
| New tall geranium pink. Large florets. Strong grower. | 10 | .75 | .50 | .25 | | 100-.15 |
| EARLY PEACH (M) Pruitt | 3 | .25 | 5-.25 | | | |
| Peach red, ivory in upper throat. Buff blotch lower petals. Wide open, ruffled florets. | 10 | .75 | .50 | .25 | | 100-.20 |
| EARLY ROSE (E) Jack | 3 | .25 | 5-.25 | | | |
| Early dark rose, decorative, good keeper. | 10 | .80 | .50 | .25 | | 100-.25 |
| EGLANTINE (Scheer) | 1 | 10.00 | 7.50 | 5.00 | | |
| Clear, sparkling medium pink with exceptionally heavy substance. 6-7" heavily ruffled florets are perfectly placed on typical exhibition spikes. | | | | | | |

Read carefully on Planting Time, Page 1, and also change of address.

S E A B R O O K N U R S E R I E S G L A D I O L U S

| | Per | Large | Medium | Small | Bulblets | Per |
|---|-----|-------|--------|-------|----------|----------|
| E. I. FARRINGTON (M) Rowe | 3 | .25 | 5-.25 | | | |
| Popular, rich, soft self-yellow. Perfectly placed florets. True commercial. | 10 | .75 | .50 | .25 | | 100-.10 |
| ELIZABETH THE QUEEN D. W. White | 1 | .35 | .25 | 2-.25 | | 15-.25 |
| An exhibition and commercial lavender—really a clean mauve—a bit darker than Minuet, with a reddish stippled feather in the throat and some flecking. | 10 | 2.80 | 2.00 | 1.00 | | 100-1.50 |
| ELLEN MARIE (E) Pruitt | 3 | .25 | 5-.25 | | | |
| Large ruffled salmon apricot, lighter throat blotch | 10 | .80 | .50 | .25 | | 100-.25 |
| ETHEL CAVE COLE (EM) Cave | 2 | .30 | .20 | 3.25 | | |
| A large light pink that makes a fine cut flower as well as an exhibition spike. Strong husky grower that opens 8 to 9 on a long flowerhead. | 10 | 1.25 | .80 | .50 | | |
| FLAMING METEOR (M) Mitsch | 3 | .25 | 5-.25 | | | |
| Tall light red. Large blooms. | 10 | .80 | .50 | | | |
| FLORA FARMER (M) Quack | 2 | .25 | 3-.25 | 5-.25 | | |
| Deep radiant pink, creamy white throat. Slightly ruffled. Vigorous. | 10 | 1.00 | .60 | .40 | | 100-.25 |
| GARDENIA Scheer | 3 | .25 | 5-.25 | | | |
| Creamy white, 5-6 medium sized florets on a tall spike. Good cut flower. | 10 | .80 | .50 | .25 | | 100-.25 |
| GATE OF HEAVEN (M) Pfitzer | 3 | .25 | 5-.25 | | | |
| Rich, deep yellow. Large ruffled florets, well placed. | 10 | .80 | .50 | .25 | | 100-.15 |
| GOLD DUST (M) Pfitzer | 3 | .25 | 5-.25 | | | |
| Fine, clear, deep yellow | 100 | .80 | .50 | .25 | | 100-.20 |
| GOLDEN CHIMES (M) Ellis | 3 | .25 | 5-.25 | | | |
| Fine soft yellow. Good spikes of ruffled florets. | 10 | .80 | .50 | .25 | | 100-.20 |
| GOLDEN CUP (LM) Palmer | 3 | .25 | 5-.25 | | | |
| Large and deeper than Golden Dream. Clear. | 10 | .80 | .50 | .25 | | 100-.20 |
| GOLDEN POPPY (M) Prestgard | 3 | .25 | 5-.25 | | | |
| Rich deep yellow brown florets. Tall, wiry stems. | 10 | .75 | .50 | .25 | | 100-.10 |
| GRETA GARBO (M) Pfitzer | 2 | .25 | 3-.25 | 3-.15 | | |
| Very large, brilliant blush white. Long flowerhead. Outstanding | 10 | 1.00 | .70 | .40 | | 100-.35 |
| HALLOWE'EN (M) Gibbs | 3 | .25 | 5-.25 | | | |
| Tall, well placed spike, orange bronze florets. Small decorative. | 10 | .75 | .50 | .25 | | 100-.15 |
| HARVEST MOON Jack | 2 | .25 | | | | |
| Medium yellow, deeper throat. Tall, straight, 6-8 open. | 10 | 1.00 | | | | |
| HINDENBURG'S MEMORY Pfitzer | 2 | .25 | 3-.25 | 5-.25 | | |
| This velvety deep scarlet glad has caused quite a sensation wherever it has been shown because of the extra large florets and spikes which it produces. For exhibition purposes it far surpasses Commander Koehl. Late midseason. | 10 | 1.00 | .75 | .50 | | 100-.25 |
| INTERMEZZO (M) Quackenbush | 2 | .35 | 2-.25 | | | |
| A new cream, informal in type, which opens 5 to 8 well placed florets. | | | | | | |

Identification of Gladiolus Blooms

Do not send a single bloom inside a letter. When the letter goes thru the stamping machine at the post office all the moisture in the bloom is pressed out on the writing in the letter and is so blurred one can not make out its meaning and the crushed bloom so damaged it can not be identified. Just send a part of the stem with 3 or 4 buds on and leave enough stem for us to place in water for the bud to open. Do not send the very tip of the spike and do not put any wet paper or anything moist whatever in the package.

SEABROOK NURSERIES GLADIOLUS

| | Per | Large | Medium | Small | Bulblets | Per |
|--|---------|-------------|--------------|-------------|----------|---------|
| ISOLA BELLA (M) Pfitzer Light pink lavender. Wide open florets. | 3 10 | .25 .80 | 5-.25 .50 | | .25 | 100-.30 |
| JASMINE (M) Palmer Clear pale lemon-yellow without marking. Slightly ruffled. | 2 | .25 | 3-.25 | | | |
| JOAN PETTY (M) Kinyon Pure pink, violet markings on cream. Florets frilled. | 3 10 | .25 .75 | 5-.25 .50 | | | 100-.20 |
| JONQUIL (M) Palmer Clear deep yellow. Medium sized florets | 3 10 | .25 .80 | 5-.25 .50 | | .25 | 100-.20 |
| J. S. BACH (E) Pfitzer Fine orange salmon, lighter in throat, white midribs | 3 10 | .25 .80 | 5-.25 .50 | | | 100-.20 |
| KING ARTHUR (M) Arenius Large ruffled lavender. | 3 10 | .25 .80 | 5-.25 .50 | | .25 | 100-.25 |
| KING LEAR Palmer Clear deep reddish purple with silver line at edges of petals. The blooms are very large and heavily ruffled on tall spikes. Early. | 3 10 | .25 .80 | 5-.25 .45 | | | 100-.25 |
| KING WILLIAM Schenetsky A beautiful salmon and apricot blend. A paler Picardy. Tall, healthy, vigorous grower. Fine commercial or exhibition. | 2 10 | .25 1.00 | .15 .60 | | | |
| LA PALOMA (E) Dusin Tall, rich orange. Large florets. Heavy texture | 3 10 | .25 .75 | 5-.25 .45 | | .25 | 100-.15 |
| LEADING LADY Johnston Light cream or creamy white with a deeper cream throat. This is a color sport of Picardy and identical with that variety except in color. Should be great for commercial and exhibition purposes. | 1 10 | .60 4.80 | .40 3.20 | .25 2.00 | | |
| LEONA (LM) Pruitt Tall, deep rose red, well spaced and faced. | 3 10 | .25 .80 | 5-.25 .50 | | | 100-.20 |
| LIBELLE (M) Pfitzer Near blue, heliotrope shade. | 3 10 | .25 .80 | 5-.25 .50 | | .25 | |
| LOTUS (EM) Prestgard Large slightly ruffled cream pink. | 3 10 | .25 .75 | 5-.25 .50 | | | 100-.20 |
| MAID OF ORLEANS (M) Pfitzer Beautiful milky white with light cream throat. Tall spike, perfect placement. | 3 10 | .25 .80 | 5-.25 .50 | | .25 | |
| MAMMOTH WHITE (M) Pfitzer Large white florets. 5-6 open. | 3 10 | .25 .80 | 5-.25 .50 | | .25 | 100-.20 |
| MARGARET BEATON (M) Twomey New immense white with orange scarlet blotch. | 3 10 | .25 .80 | 5-.25 .50 | | .25 | 100-.25 |
| MARGARET FULTON (E) Ograd Clear coral pink, lighter throat. Tall, heavy stalk. | 3 10 | .25 .80 | 5-.25 .50 | | .25 | 100-.20 |
| MARGUERITE Pommert Large deep salmon with cream throat. Produces long, flowerhead from medium height plants. Fine commercial | 1 10 | | .15 1.20 | | | |
| MARION PEARL (M) Benedict Salmon with clear lighter self throat and no markings. 6-9 of the 6" florets open on 18-21 bud spikes that are tall and straight. Received its Award of Merit from the N. E. G. S. and is a fine glad. | 1 | 1.00 | .75 | | | |

Received my bulb order in good condition, and thank you for the extras, also for the size, and wish you Good Luck for the coming season.

MR. BROWN, Hartford, Conn.

S E A B R O O K N U R S E R I E S G L A D I O L U S

| | Per | Large | Medium | Small | Bulblets | Per |
|---|---------|-------------|---------------|-------|----------|--------------------|
| MARMORA (M) Errey Many large, well placed florets on tall, strong stalk. Lavender gray, petunia colored blotch. | 3 10 | .25 .80 | 5-.25 .50 | | | |
| MARY DAMARIS (M) Clark Clear soft medium yellow of good size | 3 10 | .25 .80 | 5-.25 .50 | | | 100-.25 |
| MASTER MYRON (M) Krueger Immense rich medium red. Very tall. Florets of heavy texture. | 2 10 | .30 1.20 | .20 .80 | | | |
| MILFORD (EM) Rides Clear light blue, large florets of good placement. | 3 10 | .25 .80 | 5-.25 .50 | | .25 | 100-.20 |
| MINUET (M) Coleman Clear lavender, large flower of heavy substance. | 3 10 | .25 .80 | 5-.25 .50 | | | |
| MISS ALAMEDA (M) Salbach Large deep salmon pink, carmine blotch. Tall. | 3 10 | .25 .80 | 5-.25 .50 | | .25 | 100-.20 |
| MISS BLOOMINGTON (E) Kunderd Very early tall light yellow. | 3 10 | .25 .80 | 5-.25 .50 | | .25 | 100-.25 |
| MISS JOY (M) Blake Beautiful clear light pink. Several open on fine spike. | 3 10 | .25 .75 | 5-.25 .50 | | .25 | 100-.15 |
| MOHAWK (M) Stevens Dark velvety red, no markings. Worlds best in its class so far. | 1 10 | .20 1.60 | 2-.20 .80 | | | 15-.25 100-1.50 |
| MOTHER KADEL (EM) Moses Clear medium yellow, no markings, 5-7 well placed blooms 4 inches across. Good commercial. | 1 10 | .20 1.60 | 2-.25 1.00 | | | 15-.25 100-1.50 |
| MOTHER MACHREE (M) Stevens Smoky lavender, tinted salmon pink, flaked orange-red. | 3 10 | .25 .80 | 5-.25 .50 | | | |
| MR. LOUIS G. ROWE (LM) S. N. A charming gladiolus of dainty coloring. It is white, flushed faintly with pale pink, more strongly at tips of petals. Seven 4 inch florets open at once on a slender graceful spike. 12-15 buds on 18 inch flower head. | 3 10 | .25 .75 | 5-.25 .50 | | .25 | 100-.20 |
| MYRNA (M) Pruitt Tall heavily ruffled creamy white. Outstanding | 2 10 | .25 1.00 | 2-.20 .70 | | .50 | 100-.25 |
| NINTH SYMPHONY (M) Pfitzer Vivid salmon red with silky sheen, large wide open florets. | 3 10 | .25 .80 | 5-.25 .50 | | | |
| OGARITA Very tall straight, large rose salmon with cream throat. | 1 | .25 | .20 | | | |
| ORANGE BUTTERFLY (LM) Sal. Dainty orange, yellow throat blotches. Lovely prim. | 3 10 | .25 .75 | 5-.25 .45 | | .25 | 100-.20 |
| ORANGE PRINCESS (M) DeGroot Beautiful salmon orange with small crimson feather. Somewhat ruffled. | 3 10 | .25 .75 | 5-.25 .45 | | .25 | 100-.20 |
| OREGON GOLD Majeski A massive tall plant with many large florets open. Medium light yellow blending deeper in the throat. | 1 10 | .40 3.20 | .25 2.00 | | | 10-.30 100-2.00 |
| OREGON STATE (M) Bones A Picardy Seedling. Soft peach cream throat. | 2 10 | .25 1.00 | .15 .60 | | | 100-.20 |
| OSALIN (LM) Salbach Clear coral-pink, soft orange markings. | 3 10 | .25 .75 | 5-.25 .45 | | .25 | 100-.10 |

"THE CREAM OF THE STOCK GOES TO THE EARLY BUYERS."

S E A B R O O K N U R S E R I E S G L A D I O L U S

| | Per | Large | Medium | Small | Bulblets | Per |
|--|-----|-------|--------|-------|----------|-----|
| PARADISE (E) Pruitt | 3 | .25 | 5-.25 | | | |
| Clear apricot. Decorative, perfect placement. | 10 | .80 | .50 | .25 | | |
| PATRICIA CARTER (E) Kunderd | 3 | .25 | 5-.25 | | | |
| Very clear shell pink, no markings. A very dainty glad. | 10 | .75 | .50 | .25 | 100- | .15 |
| PEGGY LOU (LM) Wilson-Evans | 3 | .25 | 5-.25 | | | |
| Deep shrimp pink exhibition. | 10 | .80 | .50 | .25 | 100- | .20 |
| PELEGRINA (M) Pfitzer | 3 | .25 | 5-.25 | | | |
| Rich dark blue, darker blotch. Good propagator. | 10 | .80 | .50 | .25 | 100- | .20 |
| PHEDRA (M) Benedict | 1 | .35 | .35 | | | |
| Pure pink or light rose with white throat; 56 inch spike; 18 to 20 buds; 6 open; 5½ inch floret. 95 days to bloom. Does not streak or fleck; color very pure. | | | | | | |
| PHYLLIS McQUISTON (M) Stewart | 3 | .25 | 5-.25 | | | |
| Pure pink, five or more open. | 10 | .80 | .50 | .25 | 100- | .20 |
| PICARDY (LM) Palmer | 3 | .25 | 5-.25 | | | |
| Soft shrimp pink, outstanding. | 10 | .80 | .50 | .25 | 100- | .20 |
| PINK RADIANCE Quackenbush | 2 | .35 | .20 | .15 | | |
| Pure light pink without marking except a very inconspicuous touch of carmine deep in the throat. Six to eight wide open florets of good size on a tall spike which never crooks. | 10 | 1.25 | .80 | .50 | 100- | .25 |
| POLAR ICE (E) Pfitzer | 3 | .25 | 5-.25 | | | |
| Early good sized pure white. Commercial. | 10 | .80 | .50 | .25 | 100- | .25 |
| PRIDE OF WANAKAH (EM) Cris | 3 | .25 | 5-.25 | | | |
| Large deep lavender rose. | 10 | .75 | .45 | .25 | 100- | .20 |
| PRIMATE (ML) | 3 | .25 | 5-.25 | | | |
| Very tall medium light yellow, many open. | 10 | .80 | .50 | .25 | 100- | .15 |
| PRINCE OF INDIA (M) Childs | 3 | .25 | 5-.25 | | | |
| Mottled old rose. A variety of the greatest oddity and beauty. | 10 | .80 | .50 | .25 | 100- | .25 |
| PURPLE BEAUTY (M) Roozen | 2 | .25 | .15 | | | |
| Rich red purple. Clear good substance. Best purple. | 10 | 1.00 | .80 | .50 | 100- | .50 |
| QUEEN MARILYN (M) Pruitt | 3 | .25 | 5-.25 | | | |
| Lovely shell pink with cream throat. | 10 | .80 | .50 | .25 | 100- | .25 |
| RED LORY (LM) Errey | 3 | .25 | 5-.25 | | | |
| Carmine rose, purple blotches. Large florets. | 10 | .80 | .50 | .25 | | |
| REVERIE (EM) Palmer | 3 | .25 | 5-.25 | | | |
| Light pink, cream throat. Beautiful | 10 | .80 | .50 | .25 | 100- | .20 |
| REWI FALLU (E) Fallu | 3 | .25 | 5-.25 | | | |
| Deep blood red, massive blooms. | 10 | .80 | .50 | .25 | 100- | .25 |
| ROCKET | 3 | .25 | 5-.25 | | | |
| (Large Flr) (Mid-season). Most vivid gorgeous scarlet. Opens 7-8 or more, medium large perfectly placed blooms. | 10 | .80 | .50 | | | |
| ROSA VAN LIMA (M) Pfitzer | 3 | .25 | 5-.25 | | | |
| Pure, clear pink, slight lavender throat markings. Outstanding. | 10 | .80 | .50 | .25 | 100- | .25 |
| ROSY MORN Riley | 2 | .25 | 2-.20 | | | |
| Light coral rose, sometimes flecked. Opens 5-6 large, well placed blooms on a strong spike. Fine. | 10 | 1.00 | .80 | | | |

Dear Mrs. Rowe: I saw a Movie Short, on your activities at Seabrook, last week. Your business is my hobby. There is not a woman in America whom I envy as much as I do you. I should love to visit you, and your place sometime. I should fill my eyes, ears and mind with things I have always loved. Just a tribute to a worthy woman of America.

MRS. McKAMY, Dallas, Texas.

SEABROOK NURSERIES GLADIOLUS

| | Per | Large | Medium | Small | Bulblets Per |
|--|-----|-------|--------|-------|--------------|
| SEABROOK BEAUTY (LM) S N | 2 | .30 | .20 | .15 | |
| Light buff shading to pink, rose blotch. Commercial. | 10 | 1.25 | .80 | .50 | 100-.50 |
| SEAFOAM (EM) Vaughan | 3 | .25 | 5-.25 | | |
| Pure white prim, several open. | 10 | .75 | .50 | .25 | 100-.15 |
| SENSATION (L) Marshall | 3 | .25 | 5-.25 | | |
| Very large tall ruffled salmon rose. | 10 | .80 | .50 | .25 | 100-.50 |
| SHIRLEY TEMPLE (LM) Pruitt | 3 | .25 | 5-.25 | | |
| Large ruffled cream with cream yellow throat. Popular. | 10 | .80 | .50 | .25 | 100-.20 |
| SMILING MAESTRO (LM) Christ | 3 | .25 | 5-.25 | | |
| Large rich orange salmon. | 10 | .80 | .50 | | |
| SNOW PRINCESS (M) Pfitzer | 3 | .25 | 5-.25 | | |
| Large white, cream throat, good substance | 10 | .80 | .50 | .25 | 100-.20 |
| SPIRIT OF ST. LOUIS (EM) Diener | 3 | .25 | 5-.25 | | |
| Deep bronzy orange prim | 10 | .80 | .50 | .25 | 100-.15 |
| STOPLIGHT Lins | 1 | .20 | | | |
| Brilliant ruffled red opening up to eight 5 inch flowers. Doing well at the shows and is a promising commercial. | 10 | 1.60 | | | 10-.20 |
| SWEETHEART (EM) Prestgard | 3 | .25 | 5-.25 | | |
| Dainty white, pink edged prim. Fine cut flower. | 10 | .80 | .50 | .25 | 100-.15 |
| SYMPHONY (M) Palmer | 3 | .25 | 5-.25 | | |
| Tall, delicate pink. Large type. Many open. Good keeper. | 10 | .80 | .50 | .25 | 100-.15 |
| TAKINA (M) Burns | 3 | .25 | .15 | | |
| Rosaline purple, flaked darker. Giant growth. | | | | | |
| THE ORCHID (EM) Sprague | 3 | .25 | 5-.25 | | |
| Fittingly named. A new break resembling no other variety in form. A single floret worn as a cattleya would readily be mistaken for one a few feet distant. Long, narrow, ruffled and lacinated petals of very pale lavender flecked towards the ends with lavender pink. | 10 | .80 | .50 | .25 | 100-.20 |
| TOKEN (E) Crow-Pappas | 3 | .25 | 5-.25 | | |
| Tall, flame salmon, yellow throat. Ruffled florets. | 10 | .75 | .45 | .25 | 100-.15 |
| VAGABOND PRINCE (M) Palmer | 3 | .25 | 5-.25 | | |
| Mahogany brown smoky. 18 buds, 10 open. | 10 | .80 | .50 | .25 | |
| VALERIA Pruitt | 2 | .20 | .15 | | |
| Excellent early scarlet. Much like Red Phipps in color. A very promising commercial | 10 | .80 | .50 | | 100-.35 |
| VREDENBURGH (M) Pfitzer | 3 | .30 | .20 | | |
| Very large pure white, good substance. | 10 | .80 | .60 | | 100-.30 |
| WHITE BUTTERFLY (EM) Kunderd | 3 | .25 | 5-.25 | | |
| Fair sized white florets, butterfly form. Excellent small decorative. | 10 | .75 | .50 | .25 | 100-.15 |
| WHITE GOLD (E) Scheer | 1 | .35 | .25 | 2-.20 | 15-.25 |
| Mammoth cream blended to gold in throat. 7 inch florets, heavy substance, ruffled, well placed on tall spike. | 10 | 2.80 | 2.00 | .80 | 100-2.00 |
| WINSTON | 1 | .20 | 2-.25 | | |
| Most beautiful ruffled cream. | 10 | 1.60 | 1.00 | | |
| WURTEMBERGIA (M) Pfitzer | 3 | .25 | 5-.25 | | |
| Very large red with white throat. Strong grower. | 10 | .80 | .50 | .25 | 100-.20 |

No single item accepted for less than twenty-five cents

Do not split quantities as listed. Where a variety is listed at 2 for 25c, or 3 or 4 for 25c, do not order 1 or 2 at a lower price. There is no profit in any items for less than twenty-five cents.

SEABROOK NURSERIES GLADIOLUS

SPECIAL 75 CENT OFFERS

Any five items for \$3.50. Any ten items for \$6.25. Any fifteen items for \$10.00. All prices NET PREPAID. With every \$10.00 order we will include 1 large bulb of Casablanca.

| | L | M | S | | L | M | S |
|-----------------------|---|---|---|-----------------------|---|---|---|
| Albatros..... | 5 | 5 | 5 | Maid Orleans..... | 5 | 5 | 5 |
| Baby Betty..... | 5 | 5 | 5 | Margaret Beaton..... | 5 | 5 | 5 |
| Bagdad..... | 5 | 5 | 5 | Milford..... | 5 | 5 | 5 |
| Beacon..... | 5 | 5 | 5 | Orange Butterfly..... | 5 | 5 | 5 |
| Bella Donna..... | 5 | 5 | 5 | Orange Princess..... | 5 | 5 | 5 |
| Betty Co Ed..... | 5 | 5 | 5 | Paradise..... | 5 | 5 | 5 |
| Chas. Dickens..... | 5 | 5 | 5 | Peggy Lou..... | 5 | 5 | 5 |
| Coronation..... | 5 | 5 | 5 | Pelegrina..... | 5 | 5 | 5 |
| Damascus..... | 5 | 5 | 5 | Picardy..... | 5 | 5 | 5 |
| Debonair..... | 5 | 5 | 5 | Polar Ice..... | 5 | 5 | 5 |
| Duna..... | 5 | 5 | 5 | Red Lory..... | 5 | 5 | 5 |
| Early Rose..... | 5 | 5 | 5 | Reverie..... | 5 | 5 | 5 |
| E. I. Farrington..... | 5 | 5 | 5 | Rosa Van Lima..... | 5 | 5 | 5 |
| Gold Dust..... | 5 | 5 | 5 | Shirley Temple..... | 5 | 5 | 5 |
| Golden Poppy..... | 5 | 5 | 5 | Symphony..... | 5 | 5 | 5 |
| Hallowe'en..... | 5 | 5 | 5 | Token..... | 5 | 5 | 5 |
| Leona..... | 5 | 5 | 5 | Vagabond Prince..... | 5 | 5 | 5 |
| Libelle..... | 5 | 5 | 5 | | | | |

VICTORY SPECIAL

10 Red, 10 White, 10 Blue—30 Lg. Bulbs \$2.00.

Colors Kept Separate or Mixed as You Prefer.

LABELS

Everyone who grows bulbs under name will want labels. There are many different kinds on the market but think the best cheap label is a painted wooden one. However, in using the wooden labels they really should have a coat of varnish after the name is written, otherwise the paint will weather off taking the name with it. 12 x 1 1-8 25 for 50 cents, 100 for \$1.80.

Am enclosing another order, and I desire your White Gold also Corona and Greta Garbo. I already have some of your gorgeous bulbs, which always create a sensation.

MRS. WOOD, Peeve Valley, Ky.

Small Decorations

As we have so many calls for the smaller size Glads, to be used for Table Decorations, and in small homes, we have decided to list a few separate from the others. These take in all colors and shapes in the very small dainty varieties. We have had these listed right along but for some reason our customers could not pick them out and you will find them in their places here in the Catalog, showing description and prices.

- BABY BETTY (*Kinnon*) Cream and light pink.
- BETTY BROWN EYES (*Briggs*) Salmon with brown blotch.
- BETTY CO-ED (*Briggs*) Soft lafrance pink.
- BRIGHTSIDE (*Prestgard*) Talisman rose shade.
- DAINTY QUEEN (*Mc Kibbon*) Light pink laciniated very lovely.
- DEE (*Rowe*) Tall clear bright orange.
- GOLDEN POPPY (*Prestgard*) Deep yellow.
- ORANGE BUTTERFLY (*Salbach*) Dusky orange.
- PATRICIA CARTER (*Kunderd*) Clear rich pink.
- QUEEN BREMEN (*Zimmer*) Deep lavender rose.
- ROSE MIST (*Fischer*) Red-edged silver.
- SEAFOAM (*Vaughan*) Tall slender stem, white.
- SWEETHEART (*Prestgard*) Pale pink edged with deep pink.
- TALISMAN (*Gruellmans*) Canary yellow, flushed apricot.
- THE ORCHID (*Sprague*) Laciniated lavender resembling an orchid.
- WHITE BUTTERFLY (*Kunderd*) Pure white, many open.

| | | |
|------|---|--------|
| 1946 | New England Gladiolus Society Application | 1946 |
| | Supplement Membership | \$2.00 |

Entitles you to a copy of **The Gladiolus Year Book**, issued in January, also April, July and October; Supplements, containing articles on planting, fertilizing hybridizing, growing, harvesting, curing, storing and news from affiliated Gladiolus Societies.

REGULAR MEMBERSHIP

(Book Only \$1.00)

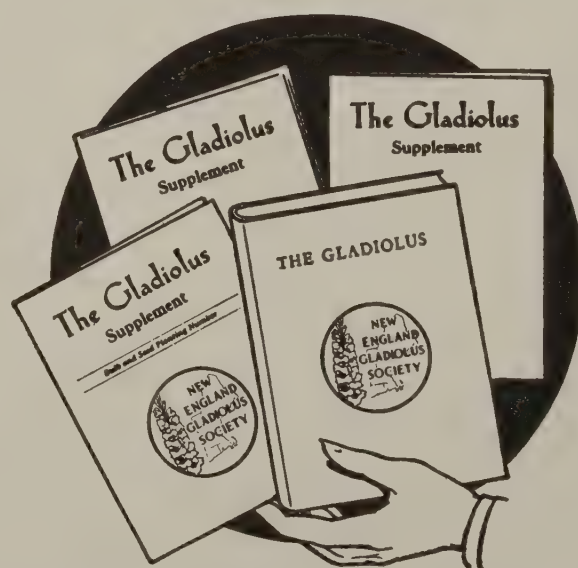
Regular cloth-bound copy of **The Gladiolus**, 1946, and membership privileges of the society.

Name

Address

Post Office

State



Send Money and Application to New England Gladiolus Society, Inc., Norwood, Mass.—Credit to **Seabrook Nurseries**.

UNLABELED COLLECTIONS AT PREPAID PRICES

We have long been noted for the excellence of our mixtures, stating with reasonable assurance, that there are but few growers able to offer as varied and choice assortments such as we assemble. The bulbs are all 1¼ inches and over, and not the medium bulbs 1 inch or smaller, such as many offer at even greater prices. If you want medium bulbs, pay only what you should.

GARDEN MIXTURE

Composing many types and sizes of fine varieties, all colors. Splendid for a gorgeous garden display or flowers for cutting. \$3.50 per hundred, fifty for \$1.75. Medium bulbs \$2.50 per hundred, fifty for \$1.25.

PRIMULINUS MIXTURE

For daintiness and quality, there is nothing that can equal our Primulinus Hybrids. For table or interior decorating, they are unsurpassed. \$3.00 per hundred, fifty for \$1.50. Medium bulbs \$1.50 per hundred, 50 for 75c.

SEABROOK MIXTURE

Exhibition Types

Made up of a large number of very choice varieties of superior merit. If bought under name the bulbs would cost many times the price asked. \$6.00 per hundred, \$3.00 for fifty. Medium bulbs \$3.50 per hundred, \$1.75 for 50.

DELUXE COLLECTION

To satisfy the demand for a mixture containing the choicest varieties that it would be possible to buy for a reasonable price, we offer this collection with the assurance given that you will be agreeably surprised at the wonderful value. Every bulb that is put into this collection is from a variety of the finest exhibition type and collection well balanced as to colors. \$9.00 per hundred, \$4.50 for fifty, \$2.25 for twenty-five. Medium bulbs, \$5.00 per hundred. \$2.50 for 50.

COLOR COLLECTION

Ten large bulbs, each COLOR labeled, 100 bulbs in all, Yellow, Red, Pink, Cream, Salmon, Lavender, White, Purple, Orange and Old Rose. These are put up in the same two grades as above, \$6.00 and \$9.00. We can assemble these also in packages of 5 each at half price.

IRIS

We have numerous varieties not labeled that can only be sold in mixtures. All good sorts in varied collection, \$1.00 dozen. Also lots of single Colors for \$1.00 dozen. Buy a Yellow, White, Orchid or Mahogany collection, also dark blue dwarf for borders. Transplanting time best in August to October.

IMPORTANT

Read carefully on Postage inside front cover.

WHOLESALE PRICES—NOT PREPAID

NOT LESS THAN 25 OF A SIZE AND VARIETY AT THE HUNDRED RATE; 250 OR MORE AT 8 TIMES THE HUNDRED RATE ON ONLY THE VARIETIES MARKED WITH *

| | Per | No. 1 | No. 2 | No. 3 | No. 4 |
|------------------------|-----|-------|-------|-------|-------|
| Albatros..... | 100 | | 5.00 | 4.00 | 3.50 |
| *Apricot Glow..... | 100 | | 3.50 | 2.50 | 2.00 |
| *Beacon..... | 100 | | 6.00 | 5.00 | 4.00 |
| Bella Donna..... | 100 | | 4.00 | 3.50 | 3.00 |
| Berty Snow..... | 100 | | | 3.00 | |
| *Betty Nuthall..... | 100 | | | 3.50 | |
| Blue Beauty..... | 100 | | | 5.00 | 4.00 |
| Clingendaal..... | 100 | | 4.50 | 3.50 | 3.00 |
| *Coronation..... | 100 | 4.50 | 3.50 | 3.00 | 2.00 |
| *Debonair..... | 100 | 4.00 | 3.00 | 2.50 | 2.00 |
| *Dee..... | 100 | 3.50 | 2.50 | 2.00 | 1.50 |
| Dr. Dentz..... | 100 | | 4.00 | 3.00 | |
| *Duna..... | 100 | 4.00 | 3.50 | 3.00 | 2.00 |
| *E. I. Farrington..... | 100 | 3.50 | 3.00 | 2.00 | 1.00 |
| *Early Rose..... | 100 | | 6.00 | 4.50 | |
| Gold Dust..... | 100 | | 4.50 | 4.00 | 3.00 |
| Golden Cup..... | 100 | | 3.50 | 2.50 | 2.00 |
| *Golden Poppy..... | 100 | | 3.00 | 2.00 | 1.50 |
| Jonquil..... | 100 | | 5.00 | 4.00 | 3.00 |
| *La Paloma..... | 100 | | 3.00 | 2.00 | 1.00 |
| Libelle..... | 100 | | 3.50 | 2.50 | |
| Leona..... | 100 | | 4.00 | 3.00 | 2.00 |
| Maid of Orleans..... | 100 | | 5.50 | 4.50 | 4.00 |
| Margaret Beaton..... | 100 | | 6.00 | 4.50 | 3.50 |
| *Margaret Fulton..... | 100 | | 3.00 | 2.50 | 2.00 |
| Mr. Louis G. Rowe..... | 100 | | 4.00 | 3.00 | 2.50 |
| Orange Butterfly..... | 100 | | 3.50 | 3.00 | 2.50 |
| Orange Princess..... | 100 | | 3.50 | 3.00 | |
| Osalin..... | 100 | 3.50 | 3.00 | 2.50 | 2.00 |
| Peggy Lou..... | 100 | | | 4.00 | |
| Pelegrina..... | 100 | | 5.00 | 4.00 | |
| *Picardy..... | 100 | 6.00 | 5.00 | 4.00 | 3.00 |
| *Polar Ice..... | 100 | 5.00 | 4.00 | 3.00 | 2.00 |
| *Reverie..... | 100 | 4.50 | 4.00 | 3.00 | 2.00 |
| *Rosa Van Lima..... | 100 | 6.00 | 5.00 | 4.50 | 3.50 |
| Seafoam..... | 100 | 3.50 | 3.00 | 2.50 | 2.00 |
| *Shirley Temple..... | 100 | 5.00 | 4.00 | 3.00 | 2.00 |
| *Snow Princess..... | 100 | | 5.00 | 4.00 | 3.00 |
| *Sweet Heart..... | 100 | 3.50 | 3.00 | 2.00 | 1.50 |
| *The Orchid..... | 100 | | 4.00 | 3.00 | 2.00 |
| *Token..... | 100 | 4.00 | 3.00 | 2.50 | 2.00 |
| Vredenburg..... | 100 | | 4.50 | | |
| *White Butterfly..... | 100 | | 3.00 | 2.50 | 2.00 |
| *Yellow Emperor..... | 100 | 4.00 | | 3.50 | |

DO NOT MIX ORDERS AT RETAIL PREPAID PRICES with the F. O. B. LIST. If this is done, it will be necessary for us to ship your order f.o.b. Seabrook, N. H.

Do not send extra money to cover pre-payment of an f.o.b. order, as it will have to be shipped f.o.b. Seabrook, N. H. We have no time for extra correspondence.

PLEASE MAKE MONEY ORDERS PAYABLE AT EXTER, N. H., POST OFFICE

DDT AS A CONTROL FOR GLADIOLUS THRIPS

By M. D. FARRAR, Research Entomologist
Illinois Natural History Survey

(Prepared at the request of the Illinois G. S.)

The new war insecticide DDT (dichloro - diphenyl - trichloroethane) has found a place in the control of Gladiolus thrips on stored Gladiolus corms. Early work indicated this thrips was very susceptible to DDT. Later tests show those findings to be correct.

The new method has its greatest use where corms are stored at temperatures that permit Gladiolus thrips to breed on corms over winter. Many growers are forced to store their corms at such temperatures favorable to the thrips. For these growers, DDT will protect their stock from damage without the labor of bagging, airing, or special cleaning of the stock. Where corms can be stored at cold temperatures unfavorable to development of thrips, use of DDT dust may not be of great value. In Illinois, experiments carried on during the last two years indicate that DDT will completely handle the thrips problem on stored corms. Corms should be dried before treatment, but they need not be cleaned.

The powder containing DDT can be scattered onto the corms at any time after they are thoroughly dry. Treating after rough cleaning may be most satisfactory, although many growers may prefer to clean stock first and then treat it before storing the cleaned corms until spring.

The dust should be worked into the trays sufficiently to coat all corms. For corms stored in bags, a small amount of dust may be added and the bag shaken to distribute the dust.

Treated corms need not be disturbed until planting time. The exposure to DDT over winter in storage apparently has no adverse effects on either the keeping quality or germination after planting. Treated corms are pleasant to handle as a result of the talcum used as carrier for the DDT.

Table 1 gives the Illinois results of tests in 1945. The corms used were dried as they came from the field and not cleaned in any way until just before planting. The dusts were applied at the rate of 1 ounce of dust to 40 pounds (1 bushel) of dry corms. In these tests dusts containing between 1 and 10 per cent of DDT completely prevented any injury to the corms by thrips. These tests indicate that a dust which contained more than 1 per cent DDT would be satisfactory for this purpose. A wide variety of commercial dusts containing 1 to 3 per cent DDT are now on the market and are available from dealers in insecticides.

The amount of dust applied is not particularly important provided sufficient dust is used to coat the dry corms. Excess dust can be shaken out and used on additional stock.

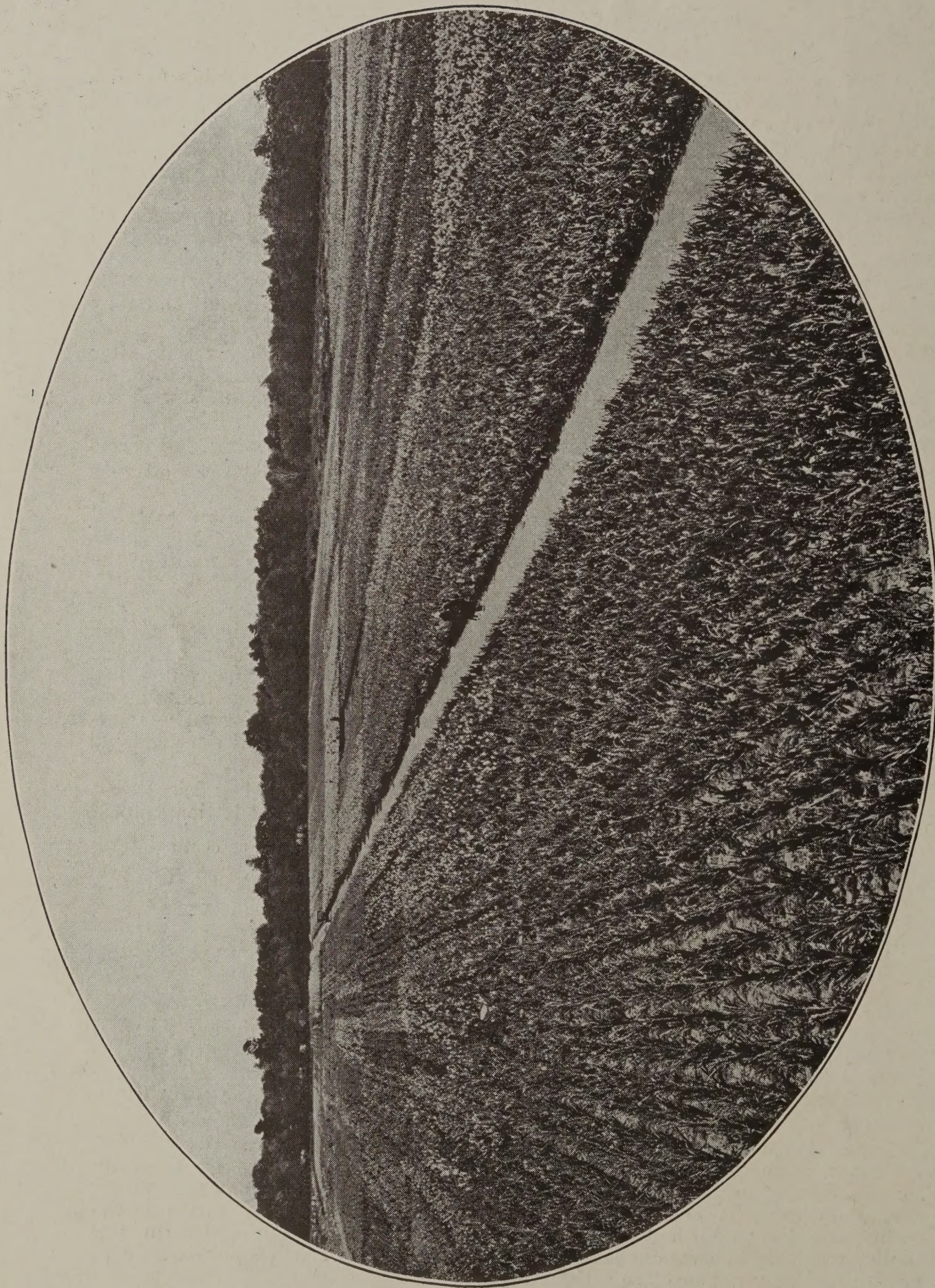
Caution: Liquid sprays containing DDT should not be used on corms until tests indicate that they do not cause injury.

Notes on the Life History of Gladiolus Thrips

Taeniothrips Simplex (Morison)

In the northern states, where corms are harvested and stored during the cold months, Gladiolus thrips apparently do not survive out of doors. Leaving tops in the field, exposed to the weather, will cause all thrips on the foliage to die. Piles of foliage or clearing shucks should be scattered or burned to insure the destruction of all thrips attempting to over-winter in Gladiolus trash piles.

Thrips carried on the corms to storage will breed at temperatures above 50° F. Unless treated, corms stored in basements where winter temperatures are generally 60° F, or above are almost sure to be injured by thrips before spring. Several generations may develop in warm basements during the winter months. Feeding of thrips on the corms will cause discolored, hardened areas on the corms. Severely injured corms dry abnormally, resulting in shrunken, misshapen planting stock. Such stock is slow to start growth and may not produce satisfactory spikes.



A portion of the 20 acres of gladiolus grown at
NEW ENGLAND'S MOST POPULAR GLADIOLUS FARM
Seabrook Nurseries, Seabrook, N. H.